

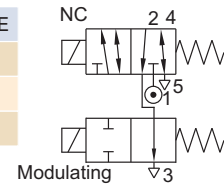
SERIES : 32D

3/2 DIRECT ACTING REGULATING, NAMUR SOLENOID VALVE

TYPE	PRESSURE

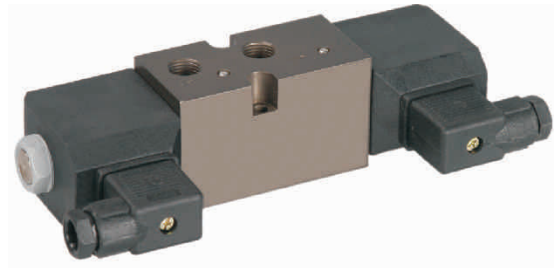
TYPE	PRESSURE

TYPE	PRESSURE
30138	0 - 10 bar



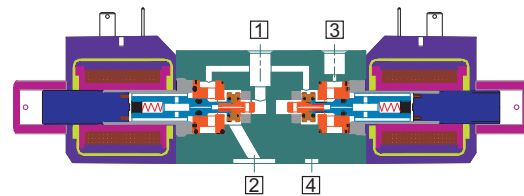
FEATURES

- Most suited for stopping spring return actuator at mid position set through limit switch
- Air or Power failure to return
- Solenoid can be operated directly or through PID Controller
- Ideal for modulating application
- Dust cap provided on the exhaust port



WETTED PARTS

Code	✕	B1	B5
Body	Anodized Aluminium	Anodized Aluminium	SS 316
Internals	Aluminium, Brass and SS 316	SS 316	SS 316
Guide Assembly	SS 304		
Shadow-Ring	-		
Plunger, Insert	SS 430		
Spring	SS 302		
Fasteners	SS 304		
Seat, Seals	NBR, Viton, Viton GLT, F.Silicon		



AMBIENT AND FLUID TEMPERATURE

-20 °C to 80 °C

SPECIAL VERSION AND SUFFIX

Suffix : (Valve) AM, WO
Special version : (Solenoid) CO, FR, SS, LC, III

MEDIA

Air, Inert Gases

APPLICATION

Operation of single acting actuator

PORT CONNECTION

INLET	OUTLET	OUTLET	EXHAUST	EXHAUST
1	2	4	3	5

Contact Rotex for

- Any other ambient, fluid temperature, media and application
- UL listed, Listed general purpose Valve



For Valve type 30138 operated with AC voltage select inbuilt full rectified special version of solenoid with option FR

SPARES

(Refer page 25 for ordering code)

SPARE KIT	CODE
Seal Kit : Oring Set and Plunger Assembly	98
Repair Kit : Oring Set, Plunger Assembly, Fastener, Springs, Manual Override	99
Solenoid Kit : Solenoid, Gasket and Nut	34

APPROVAL

(★ applied for)

Approval	Nema 4X	IP67	Ex d IIC T4 or T5 or T6 IP66	Ex ia IIC T6 IP67	DGMS	CCOE
		✓	✓	✓	✓	✓
CE		✓	✓	✓		
UL	✓		*			
			✓	✓		
PC			✓	✓		
			*	*		



