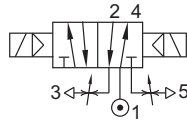
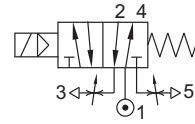


5/2, 3/2 CONVERTIBLE WITH INTEGRAL FLOW CONTROL, NAMUR SOLENOID VALVE

TYPE	PRESSURE
VAD214NCFC	2 - 10 bar



TYPE	PRESSURE
VAD213NCFC	3.5 - 10 bar



SINGLE/ DOUBLE SOLENOID VALVE

FEATURES

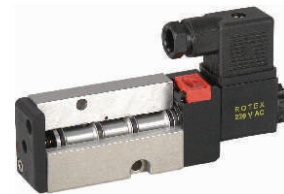
- High flow NW 5.3, kv=10 lpm@1bar
- Best suited for indoor application
- Best suited where speed regulation is desired
- Avoid rain/ water splashing on the solenoid



Match Slot 4 for 5/2



Match Slot 2 for 3/2



WETTED PARTS

Code	※
Body	Anodized Aluminium
Internals	Aluminium, Brass
Guide Assembly	Brass
Shadow-Ring	Copper
Plunger, Insert	SS 430
Spring	SS 302
Fasteners	SS 304
Seat, Seals	NBR

AMBIENT AND FLUID TEMPERATURE

-10 °C to 60 °C

MEDIA

Air, Inert Gases

APPLICATION

Operation of double/ single acting/ actuator

PORT CONNECTION

INLET	OUTLET	OUTLET	EXHAUST	EXHAUST	PILOT EXHAUST
1	2	4	3	5	6

SPARES

(Refer page 25 for ordering code)

SPARE KIT	CODE
Seal Kit : Oring Set and Plunger Assembly	98
Repair Kit : Oring Set, Plunger Assembly, Fastener, Springs, Manual Override	99
Solenoid Kit : Solenoid, Gasket and Nut	34

APPROVAL

(※ applied for)

Approval	Nema 4X	IP67	Ex d IIC T4 or T5 or T6 IP66	Ex ia IIC T6 IP67	DGMS	CCOE
		✓				
		✓				

Contact Rotex for

- Any other ambient, fluid temperature, media and application



Recommended for indoor application.
Due to PTFE sealing valve may have small leakage across the port.

5/2, 3/2 CONVERTIBLE SPOOL TYPE, WITH INTEGRAL FLOW CONTROL , SOLENOID NAMUR

SPECIFICATION

PORT CONNECTION			PRE-SSURE bar		ORIFICE (mm)	FLOW FACTOR kv (LPM @ 1 bar ΔP)	VALVE TYPE	BODY MATERIAL AND INTERNALS				SEALS				MANUAL OVERRIDE		SOLENOID ENCLOSURE		OUTLET PORT	POWER VA		CONSTRUCTION REFERENCE NUMBER						
SIZE	BSP(F)	NPT(F)	MINIMUM	MAXIMUM				ALUMINIUM	ALUMINIUM + SS	BRASS (STD. PORT NPT)	SS 316/ CF8M (STD. PORT NPT)	NBR	Viton	EPDM	PTFE	NIL	STAY/PUT CUM MOMENTARY	WEATHER PROOF	EXPLOSION PROOF		FLYING LEAD	PLUG IN, IP67		SQ. PLUG IN, IP67	TERMINAL BOX IP67	FPJB Ex d IIC, T4 OR T6, IP67	LARGE ENCLOSURE	SOLENOID SIZE	NAMUR
5/2, 3/2 CONVERTIBLE SINGLE SOLENOID																													
1/4"	2G	2R	3.5	10	5	10	VAD213NCFC	*					*											8	2	18	12	8	N21
5/2, 3/2 CONVERTIBLE DOUBLE SOLENOID																													
1/4"	2G	2R	2.0	10	5	10	VAD214NCFC	*					*											8	2	18	12	8	N22

* = Do not specify when opted for

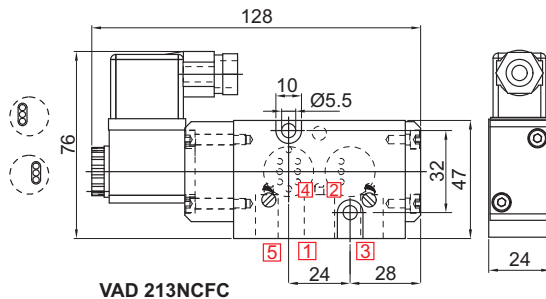
ORDERING CODE, EXAMPLE VALVE + SOLENOID

TYPE - ORIFICE - PORT CONNECTION - BODY AND INTERNALS - MANUAL OVERRIDE - SEAL + VOLTAGE - CURRENT - SOLENOID ENCLOSURE - APPROVAL - INSULATION
 e.g. VAD 213NCFC+110V AC

DIMENSIONS

All Dimensions are in mm

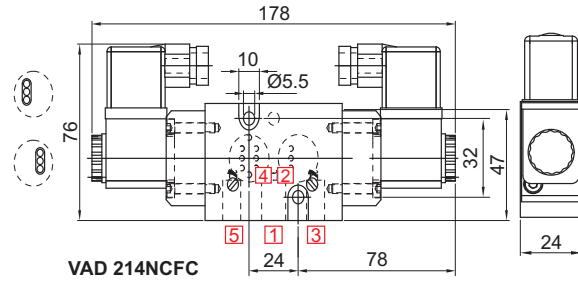
CONSTRUCTION REFERENCE N21



VAD 213NCFC

PLUG IN SOLENOID TYPE 22

CONSTRUCTION REFERENCE N22



VAD 214NCFC

PLUG IN SOLENOID TYPE 22