

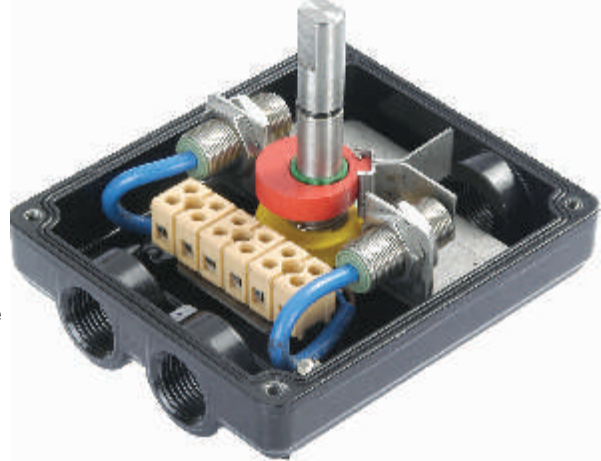
DXLW 2



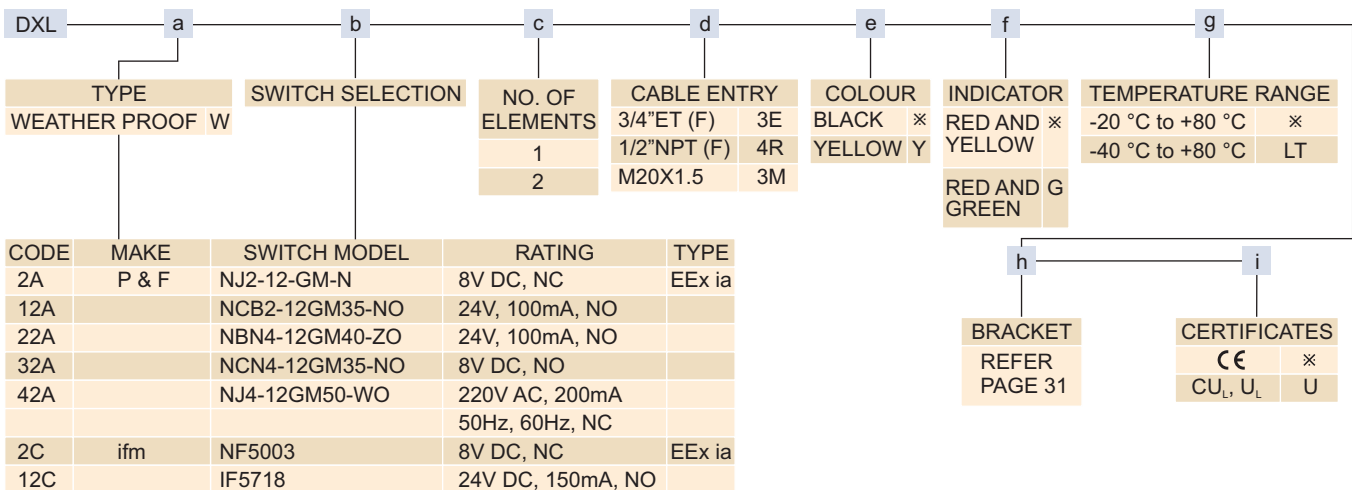
EEx ia

FEATURES

- Aluminium Diecast, with powder coating for superior corrosion resistance
- Shatterproof polycarbonate Dome
- Easily settable colour coded cam
- The locked serrated settings cams, ensures the secured setting against any vibration
- P&F cylindrical inductive proximity Sensors (EEx ia)
- The proximity switches are available in NAMUR and NO/ NC type
- Customer can choose any M12 proximity switch
- Three cable entries provided are standard
- Cable entries M20X1.5, 3/4" ET, 3/4" NPT
- Complies to NAMUR Mounting standards
- Additional mounting Accessories have compatibility with various Actuator manufacturers available
- Stainless steel bracket available as an option
- Switch box confirms to UL508, UL file no. E249752
- Temperature range -20 °C to +80 °C
On request -40 °C to +80 °C



ORDERING OPTIONS



ORDERING EXAMPLE

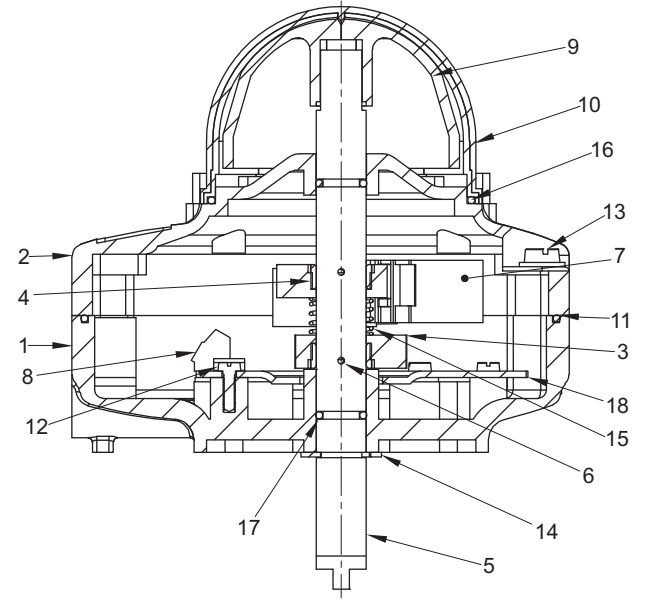
- DXLW-12A2-4R-B-U
- UL approved, a weather proof box provided, with PEPPERL+FUCHS switches 2 nos, DC out put, each with 1 NO, 1/2" cable gland entry. A Stainless Steel bracket, suitable for 80X30 tapping and for 20mm pinion height

VERSATILE LIMITSWITCH

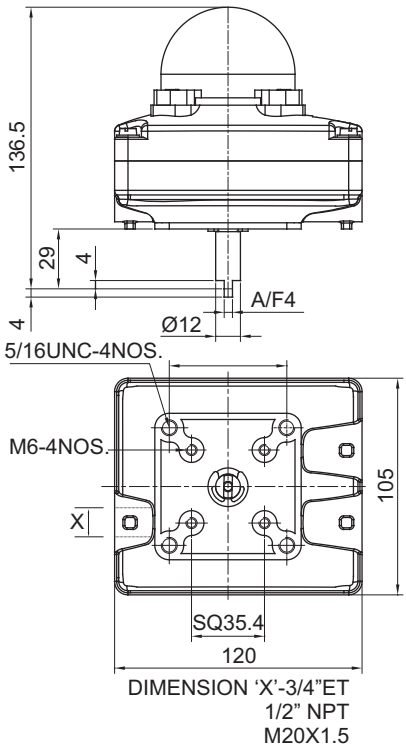
MATERIAL OF CONSTRUCTION

| S.NO. | DESCRIPTION | QTY. | MATERIAL |
|-------|--------------------------|------|----------------------|
| 1 | HOUSING | 1 | ALUMINIUM ALLOY LM-6 |
| 2 | COVER | 1 | ALUMINIUM ALLOY LM-6 |
| 3 | CAM | 2 | POLYAMIDE |
| 4 | CAM-LOCK | 2 | DELTRIN |
| 5 | SHAFT | 1 | STAINLESS STEEL |
| 6 | SPRING DOWEL | 2 | SPRING STEEL |
| 7 | PROXIMITY SENSOR | 2 | P & F, ifm |
| 8 | THREE WAY TERMINAL BLOCK | 4 | - |
| 9 | INDICATOR | 1 | ABS PLASTIC |
| 10 | INDICATOR COVER | 1 | POLYCARBONATE |
| 11 | GASKET | 1 | NBR |
| 12 | SCREW FOR BRACKET | 2 | STAINLESS STEEL |
| 13 | NON FALLING SCREW | 4 | STAINLESS STEEL |
| 14 | 'E' TYPE CIRCLIP | 1 | SPRING STEEL |
| 15 | SPRING | 1 | STAINLESS STEEL |
| 16 | O-RING | 1 | NBR |
| 17 | O-RING | 2 | NBR |
| 18 | PRINTED CIRCUIT BOARD | 1 | - |

CROSS SECTION

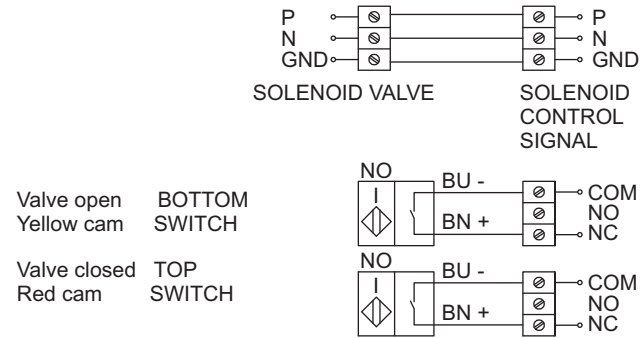


DIMENSIONS (In mm)



WIRING DIAGRAM

2 WIRE PROXIMITY-NO



2 WIRE PROXIMITY-NC

