

## DXLW3



EEx ia

### FEATURES

- Intrinsically safe
- Weather Proof enclosure, IP67
- P&F flat type inductive proximity Sensors (EEx ia)
- Up to Maximum 2 Sensor Elements
- Aluminium Diecast, with powder coating, for superior corrosion resistance
- Shatterproof polycarbonate Dome
- Easily settable colour coded cam
- The locked serrated settings cams, ensures the secured setting against any vibration
- Special PCB eliminates all wiring from the switch element to the terminals. Complete protection against short circuit.
- Three cable entries provided as a standard
- Cable entries M20 X 1.5, 3/4" ET, 1/2" NPT
- Complies to NAMUR Mounting standards
- Solenoid termination inside the switch box is possible
- Proximity switches are available in NAMUR and NO/ NC type
- The customer can choose any flat V3 proximity switch
- Additional mounting hole is threaded as per the UNC series
- Range of Mounting Accessories having compatibility with various Actuator manufactures available
- Stainless steel bracket available as an option
- Switch box confirms to UL508, UL file no. E249752
- Temperature -20 °C to +80 °C
- On request -40 °C to +80 °C



### ORDERING OPTIONS

DNL	a	b	c	d	e	f	g
TYPE	SWITCH SELECTION	NO. OF ELEMENTS	CABLE ENTRY	COLOUR	INDICATOR	TEMPERATURE RANGE	
WEATHER PROOF W		1	3/4"ET (F)	BLACK *	RED AND * YELLOW	-20 °C to +80 °C	*
		2	1/2"NPT (F)	YELLOW Y	RED AND G GREEN	-40 °C to +80 °C	LT
			M20X1.5				
CODE	MAKE	SWITCH MODEL	RATING	TYPE	h	i	
3A	P & F	NJ2-V3-N	8V DC, 3mA, NC	EEx ia	BRACKET	CERTIFICATES	
13A		NBB3-V3-Z4	10-60V DC, 100mA, NO		REFER	CE	*
3C	ifm	IS5026	24V DC, 200mA, NO/ NC		PAGE 31	CU, U <sub>L</sub>	U
			OPTIONAL				
13C		NS5002	8V DC, NC	EEx ia			
23C		NF0073	20-250V AC/ DC, NO				

- Note : (1) The range is not limited to ones listed above.  
Other versions can be offered as per the requirement  
(2) Does not require an Exproof enclosure as a standard

### ORDERING EXAMPLE

- DXLW-13A2-4R-B1-U
- UL approved, Explosion proof to UL1203 and UI528, and a weather proof box is provided with PEPPERL+FUCHS switches 2 nos, DC out put, each with 1 NO, 1/2" cable gland entry. A Stainless Steel bracket, suitable for 80X30 tapping and for 20mm pinion height

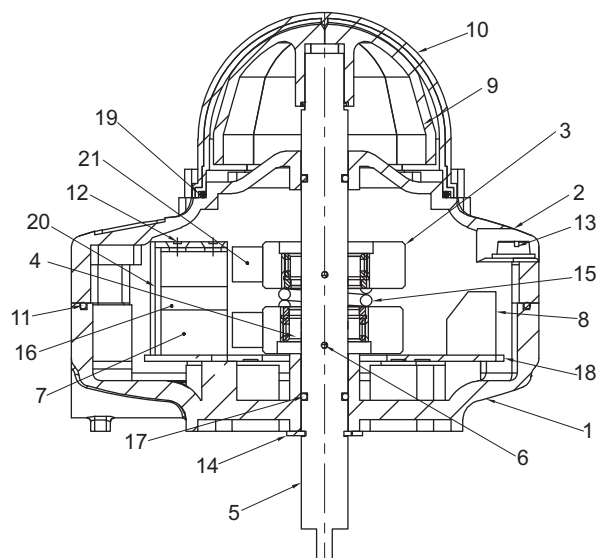
# VERSATILE LIMITSWITCH

## DXLW3

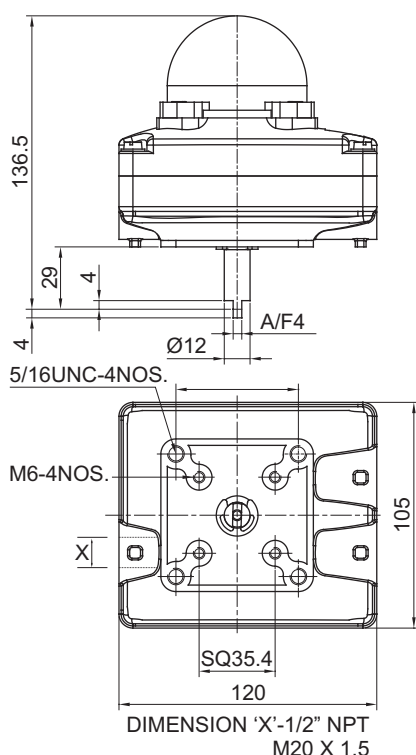
### MATERIAL OF CONSTRUCTION

S.NO.	DESCRIPTION	QTY.	MATERIAL
1	HOUSING	1	ALUMINIUM ALLOY LM-6
2	COVER	1	ALUMINIUM ALLOY LM-6
3	CAM	2	POLYAMIDE
4	CAM-LOCK	2	DELTRIN
5	SHAFT	1	STAINLESS STEEL
6	SPRING DOWEL	2	SPRING STEEL
7	PROXIMITY SENSOR	2	P & F, ifm
8	THREE WAY TERMINAL BLOCK	4	-
9	INDICATOR	1	ABS PLASTIC
10	INDICATOR COVER	1	POLYCARBONATE
11	GASKET	1	NBR
12	SCREW FOR MICROSWITCH	2	STAINLESS STEEL
13	NON FALLING SCREW	2	STAINLESS STEEL
14	'E' TYPE CIRCLIP	1	SPRING STEEL
15	SPRING	1	STAINLESS STEEL
16	PAD	1	POLYAMIDE
17	O-RING	2	NBR
18	PRINTED CIRCUIT BOARD	1	-
19	O-RING	1	NBR
20	COVER FOR MICROSWITCH	1	POLYAMIDE
21	CAP FOR SENSOR	2	STAINLESS STEEL

### CROSS SECTION

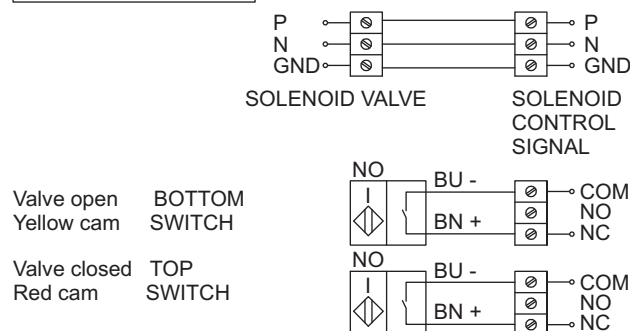


### DIMENSIONS (In mm)



### WIRING DIAGRAM

#### 2 WIRE PROXIMITY-NO



#### 2 WIRE PROXIMITY-NC

