

DTM96 Communication Module

The DTM96 functions as an RS232 to RS485 convertor and / or enables (32) DTM modules to be networked together via Modbus. Combined with the DTM-CFG configuration software, the DTM96 truly provides a distributed vibration system. The Modbus interface enables users to remotely monitor, configure, and calibrate the DTMs.

DTM96 Features

- ✓ **Direct Modbus RTU interface**
- ✓ **Optically isolated RS485, RS422, and RS232 communications**
- ✓ **Communicate with the DTM using your computers RS232 connection**
- ✓ **Provides galvanic isolation between PC and DTM**

Specifications

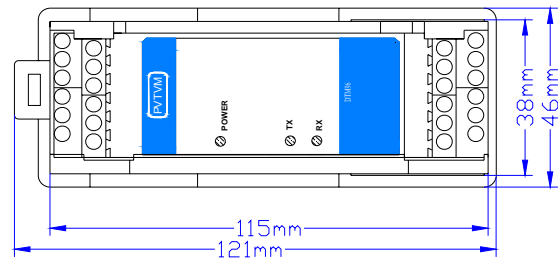
Electrical

Power Supply:	22-30VDC, 150mA Galvanic isolation
Modbus:	Modbus RTU RS485 and RS232 Galvanically Isolated
	Modbus TCP RJ45 Ethernet connection Galvanically Isolated



Physical

Dimension:
 Height: 75mm (2.95") see figure below.
 Weight: 0.7lb (0.3kg).



Rail Mounting

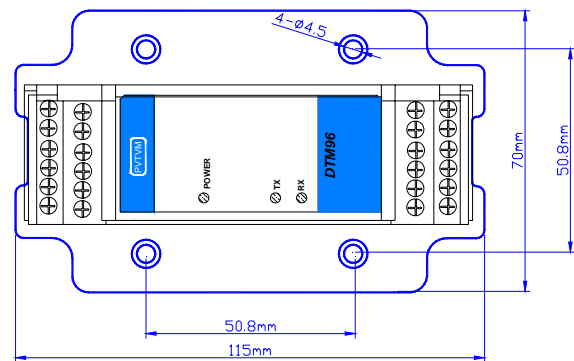


Plate Mounting

Environmental

Temperature:
 Operation: -40°C ~ +85°C .
 Storage: -50°C ~ +100°C .
 Humidity: 90% non-condensing.
 Case: Aluminum

Certification

CE certified with EMI compliance

CSA: Class I, Div. 2, Grps A,B,C&D,T4

ATEX: II 3 G Ex nA II T4

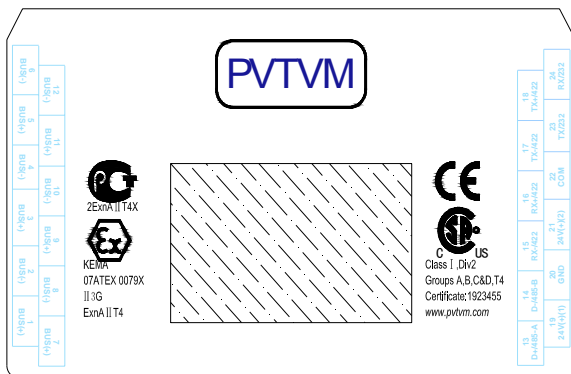
**TR CU: 2Ex nA IIT4 X

№ TC RU C- US.ГБ05.B.00476

NANIO CCVE

Hazardous area

Marking:



ATEX Standards :

EN 60079-0

EN 60079-15

Special condition in hazardous area:

- The ambient temperature range is: $-40^{\circ}\text{C} \leq T_a \leq 70^{\circ}\text{C}$
- DTMs must be placed inside an enclosure that is in accordance with EN 60079-15:2005.
- Provisions must be made externally to prevent the rated voltage from being exceeded by transient disturbances of more than 40 %.

Ordering Information

DTM96-AX-BX-SX

DTM interface module with RS485 and RS232.

AX: Output

A0*: Modbus RS485, RS232, RS422

BX: Mounting

B0*: DIN rail mounting

B1: Plate mounting

SX: Approvals

S0*: CE

S1: CE certified with EMI compliance

CSA: Class I, Div. 2, Grps A,B,C&D, T4

ATEX: II 3 G Ex nA II T4

TR CU: 2Ex nA II T4 X

№ TC RU C- US.ГБ05.B.00476

NANIO CCVE

* Denotes factory default.

** TR CU certificate is pending

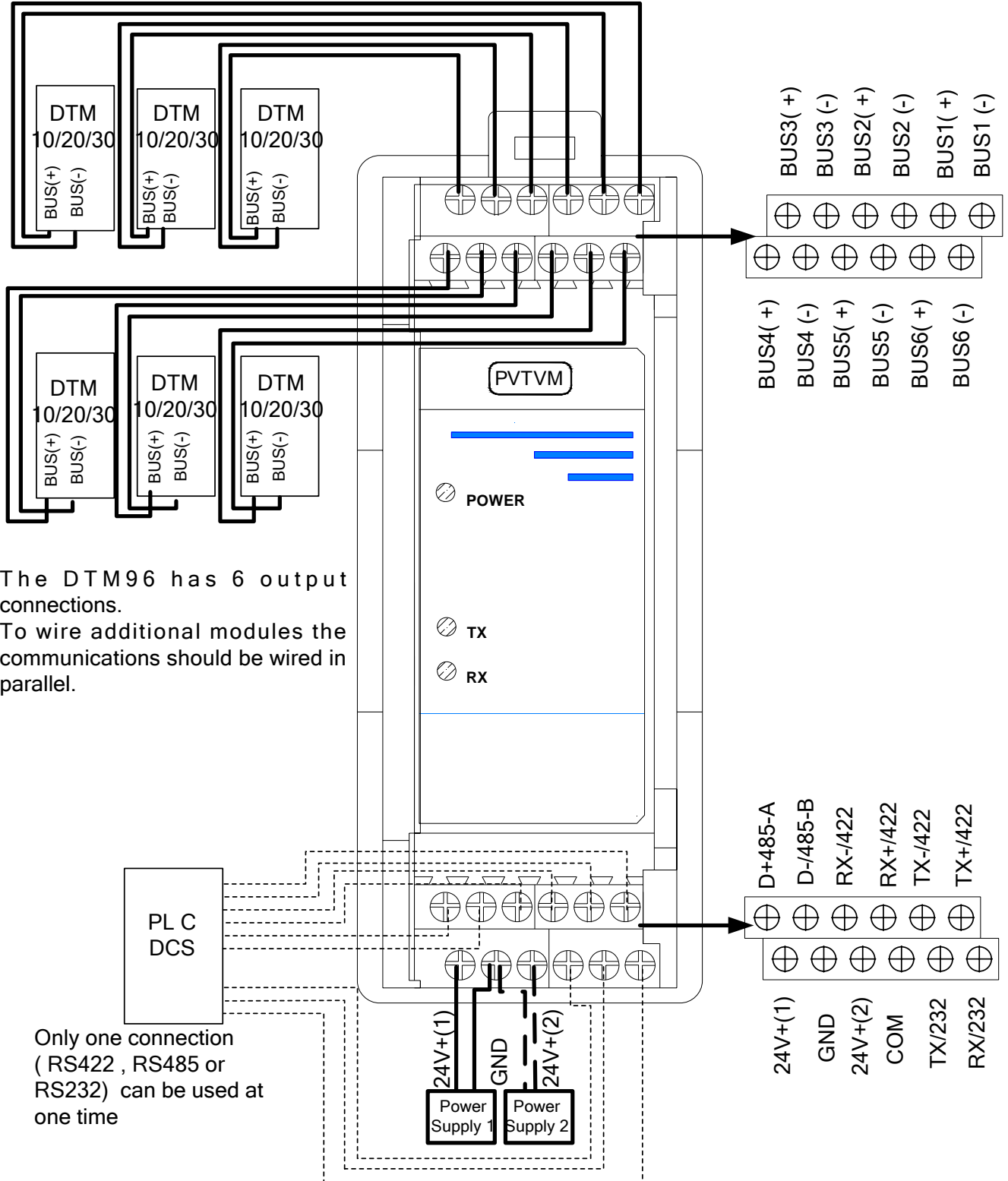
Optional Accessories

TM900A

Din Rail Mounted Power Supply. It converts 100-240VAC into 24VDC and is capable of powering up to five DTM modules.

DTM96 System Installation

Installation – field-wiring diagram



The DTM96 has 6 output connections. To wire additional modules the communications should be wired in parallel.

Only one connection (RS422, RS485 or RS232) can be used at one time

DTM-CFG Configuration and Calibration Software

DTM-CFG is the configuration and calibration software used to configure all DTM modules. DTM-CFG works with Windows XP or Windows 2000 operating system.

DTM-CFG can be connected to the DTM modules with the interface of a RS485-USB cable kit.

DTM-CFG combined with the DTM96 allows the user to remotely interface with 32 DTMs networked together in the field.

DTM-CFG Features

- ✓ DTM Configuration
- ✓ DTM Calibration

Specifications

Module Configuration:

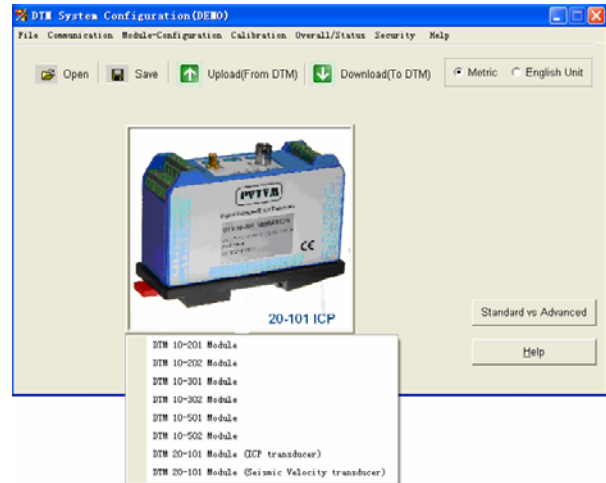
- ✓ Module type selection
- ✓ Modbus ID address, Range
- ✓ Communication baud rate
- ✓ Auto manual search of communication port
- ✓ English or metric selection
- ✓ Password and security

Operation Configuration:

- ✓ Sensor and sensitivity selection
- ✓ Measurement unit selection
- ✓ Full-scale
- ✓ Dual-alarm set-points, time delay, latching
- ✓ Relay energized/de-energized. Relay programmed to Alert or OK
- ✓ OK set-points

Maintenance Calibration:

- ✓ ZERO calibration, SPAN calibration
- ✓ Probe linearization calibration
- ✓ Real-time overall and status display
- ✓ Record of overall and status
- ✓ Configuration parameter save as file



Order Information

DTM-CFG-K

DTM configuration and calibration software kit includes:

- ✓ DTM-CFG configuration and calibration software CD
- ✓ RS485-USB converter with cable
- ✓ User manual

DTM-CFG

DTM configuration and calibration software includes:

- ✓ DTM-CFG configuration and calibration software CD
- ✓ User manual

DTM-CAL

The DTM field calibration kit with probe calibration capability with any 5mm, 8mm and 11mm probe system.

The kit includes:

- ✓ DTM-CFG configuration and calibration software CD
- ✓ RS485-USB converter with cable
- ✓ TM0540 proximity probe field calibration kit
- ✓ User manual

Optional Accessories

RS485-USB: RS485 to USB converter with cable

RS232-USB: RS232 to USB converter with cable

DTM96: Isolated communication module

TM0540: Proximity probe field calibration kit

DTM networking and on-line condition monitoring

